

please join us!



In person on Sundays!

Worship Service - 9am
Coffee & Doughnuts - 10am

Join us live on Facebook

St. Paul United Church of Christ

Go to stpaulucc.org

For videos of services, sermons,
archives, events and much more!!

Sign up for the online weekly

eNews newsletter and
Our St. Paul monthly newsletter!

St. Paul United Church of Christ

115 W. B. Street
Belleville, IL 62220
618-233-3303

Event Rental Space Available!

115 W. B. St., Belleville, IL 62220

Label Here

OUR ST. PAUL

JUNE 2026



stpaulucc.org

Your St. Paul Team

Rev. Joan H. Mier, Supply Pastor
 Ken Dahm, Facility Manager
 Sherry Wilhelm, Office Manager
 Kathy Buehler, Bookkeeper
 Dr. Tristan Frampton, Director of Music
 Cynthia Johnson, Organist
 Evan Wilhelm, Support Staff

Worship Leaders

JUNE 7- REV. JOAN H. MIER

JUNE 14 - CRAIG BIELKE

JUNE 21 - REV. JOAN H. MIER

JUNE 28 - CRAIG BIELKE



St. Paul UCC office hours:

Monday – Thursday

8:30am–4pm

Friday

9am–12pm

618–233–3303

stpaulucc.org

OUR ST. PAUL is published monthly.

Material for inclusion may be sent to the church noted for Our St. Paul. swilhelm@stpaulucc.org or call the office.

Next issue: July- Deadline to submit information: June 19th.

Happy Birthday

6/3-Rusty Wagner

6/7-Vi Nettleton

6/10-Pete Kobernus

6/15-Joyce Bevirt

6/16-Rob Naylor

6/17-Mona Scheibel

6/21-Nancy Beasley

6/23-Kristine Vineyard

6/29-Karen Zaber

6/30-Norma Franke

HAPPY Anniversary

6/7-Sandy & Drew Kramer

6/9-Archie & Amy Garces

6/9-Brett & Elise White

6/15-Wes & Sandy Krummrich

6/17-Alan & Karen Keuss

6/19-Fred & Carol Hotz

6/22-Ryan & Amy Florek

6/24-Sonny & Melinda Bernal

6/30-Craig & Kathy Liddy

REVENUE	2026 Final Budget	2026 Apr Actuals	YTD Actuals	% of Budget
130100 - Congregational Offerings	\$352,648.00	\$51,107.00	\$137,661.00	39.04%
130104 - Fund Raising Events*	\$4,000.00	\$0.00	\$0.00	0.00%
130105 - Rental Income-205 W B St.	\$15,120.00	\$1,260.00	\$5,040.00	33.33%
130500 - Building Fund	\$10,000.00	\$392.00	\$946.00	9.46%
130741-BASSC Utilities	\$6,900.00	\$947.96	\$2,588.72	37.52%
1302xx - Outreach (Various Missions #)	\$0.00	\$1,735.00	\$2,285.00	N/A
130323 - Bank/Paypal Revenue	\$0.00	\$0.00	\$0.00	#DIV/0!
131100 - Memorials	\$8,000.00	\$350.00	\$2,460.00	30.75%
131200 - Bequests	\$0.00	\$0.00	\$0.00	N/A
131300 - Building Income	\$6,000.00	\$600.00	\$900.00	15.00%
131400 - Pastoral Honorarium	\$0.00	\$0.00	\$0.00	#DIV/0!
131499 - Pastoral Expense Revenue	\$0.00	\$0.00	\$0.00	N/A
131500 - Investment Income /Michelson Income	\$28,400.00	\$0.00	\$14,910.00	52.50%
131600 - Distribution from Endowment (Per Guidelines)	\$171,710.00	\$0.00	\$0.00	0.00%
131650 - Distribution from Endowment (Cap. Exp.)	\$10,000.00	\$0.00	\$0.00	0.00%
131900 - Other Income	\$0.00	\$312.00	\$915.74	#DIV/0!
Total Operating Revenues	\$612,778.00	\$56,703.96	\$167,706.46	27.37%
Team Revenues	\$4,677.27	\$269.50	\$1,341.26	28.68%
Capital Expenses				
Grand Total	\$617,455.27	\$56,973.46	\$169,047.72	27.38%
EXPENSES				
Personnel Expenses	(\$357,080.60)	(\$15,019.03)	(\$62,921.56)	17.62%
Administrative Support (formerly Operating Expenses)	(\$36,643.47)	(\$2,678.75)	(\$10,519.21)	28.71%
Outreach (formerly Mission board)	(\$9,500.00)	(\$700.00)	(\$700.00)	7.37%
Education	(\$1,500.00)	(\$4.96)	(\$40.70)	2.71%
Stewardship	(\$1,200.00)	\$0.00	(\$389.56)	32.46%
Property	(\$193,631.20)	(\$13,966.31)	(\$71,839.83)	37.10%
Congregational Care (formerly Worship Board)	(\$15,900.00)	(\$1,550.81)	(\$2,869.16)	18.05%
General Fund	(2,000.00)	-	\$0.00	N/A
Total Operating Expense	(\$617,455.27)	(\$33,919.86)	(\$149,280.02)	24.18%
Difference between Revenue & Expenses	\$0.00	\$23,053.60	\$19,767.70	

ATTENDANCE & OFFERINGS

Apr-26 9am 383 + Online

Apr-25 9am 456 + Online

Apr-26 All Gifts: \$36,283.46

Apr-25 All Gifts: \$41,922.26

Memorials & Gifts

St. Paul Church gratefully acknowledges
your generosity.

TO THE GLORY OF GOD AND
IN LOVING MEMORY OF:

IMO Marilee Black
Kent Black

IMO Cheryl Cooper
Lana & Scott Gentry

IHO Sandy Wagner's B-Day
**Tafra Perryman &
Dianne Hilgert**



May God watch over these church members and friends, bringing them peace, comfort, strength, and healing wherever it's needed. May they feel His presence in their hearts, be uplifted in spirit, and surrounded by love and support.

Carol Hotz & Fred Hotz
The Ritter family, Tim, Sandy & Tim Jr.
Lou Ann Niemann
Al Stahl
Audrey Krummrich
Laura Sadler

Alec Zaber
Jane Bonaldi
Ruth Klingel
Cathy Blaies and family
(Mike's sister)
Our Pastor Search Committee

Please call the office for prayer requests. 618-233-3303

Hello beloved ones in Christ Jesus! My name is Rev. Joan Mier and I have been asked to share a few words with you about my current status serving at St. Paul's United Church of Christ. If you look at the top of your Sunday bulletin, you will see that I am listed as "Supply Pastor" rather than "Guest Pastor." The reason for this is that I am taking on a few extra pastoral responsibilities other than just "filling the pulpit" for two Sunday services a month. I want to make it clear that I am not serving as an Interim Minister, a pastor who is contracted for a period of time with the church and who takes on many of the responsibilities similar to what the former pastor did for the church community. I am just giving a few extra hours for such things as: Pastoral Care Counseling—this will be offered to those individuals who feel they are needing to speak with a pastor regarding issues in their lives. Most often, these times will be offered on the Sundays that I am at St. Paul's UCC after service is completed. However, if there are other times needed, we can work something out. Please know that I am not a professional counselor, rather a pastor offering spiritual counseling. Therefore, I would meet with you up to three times before recommending that you seek additional professional counseling. In addition, I have been asked to provide Confirmation classes for youth and adults who are interested in attending such a class. Presently, we have several people interested in attending a Confirmation class; this may not happen until the Fall. I have also stated that if there is a severe pastoral emergency and a congregant is needing a pastor, I will try to assist with this need to the best of my ability. On occasion, depending on my availability, I will also be available to conduct Funeral and Memorial services. Please note that the plan is for me to work no more than the equivalent of fifteen hours per week. If you are needing to be in contact with me, please call the church office first and Sherry will reach out to me, but if the office is closed and it is necessary to reach me, you can send me an email at Pasjoan@sbcglobal.net. Please give in as much detail as possible the pastoral need and who this is for in the email. I hope this information helps in understanding my slightly extended pastoral role at St. Paul's UCC. In the LOVE and LIGHT of CHRIST,

Pastor Joan



Dear St. Paul Family,

We are writing as members of the Personnel Team of St. Paul about an exciting new process we have decided to use in our congregation to help provide high-quality feedback to our minister, staff, and lay leaders about how our members are experiencing the life and mission of our church.

In years past, we have conducted performance evaluations of our ministerial staff. Those evaluations were fairly annual, but almost every year the instrument and means of collecting feedback has been different and yielded information that didn't quite fit the work-ministry-of a church. The information did not always inform our goals or filter into our everyday congregational life.

With this in mind, we have decided to adopt a new model of evaluation for St. Paul that will be simple but also quite different. The process is called "Completing the Circle." Briefly, in this process, our teams (formerly boards) and council will set goals for effective ministry and small groups of our members will be invited to meet with members of our Personnel Team in "feedback/reflection groups."

The feedback/reflection groups will provide an opportunity for participants to talk with one another about what they are experiencing in various aspects of our church's life and mission. A key feature here is that we will be asking people not to evaluate what they have experienced, but simply to share what the experience was like. This important aspect of the feedback/reflection groups will be explained in more detail at the beginning of each group.

Each group will have a specific focus related to our congregational life. In a few groups the discussion will center on what participants experienced in worship. Other groups will discuss experiences of being on a team or committee, a teacher/participant in Christian education, a caregiver or recipient of congregational care, and other aspects of our shared congregational life.

More information will be forthcoming about when and how you have the opportunity to participate in a feedback/reflection group. Some groups will include specific participants while others will be made up of those who sign up to be part of the conversation.

This method is being initiated out of a need to implement an easy system for obtaining genuine feedback that relies on healthy habits of interpersonal communication. We believe that good feedback will produce the good results we desire for the glory of God.



MONDAY FUN-DAY!
4th Monday of every month!
Chair Yoga 6-6:30pm
Yoga 6:30-7pm
Pickleball 6-8pm
St. Paul UCC
115 W. B. Street, Belleville
Enter on 2nd St. at the Activity Center door!
No cost - just a free will offering!
618-233-3303
A free will offering is happily accepted.
Free! All are welcome!

Puzzles and Board Games Available!

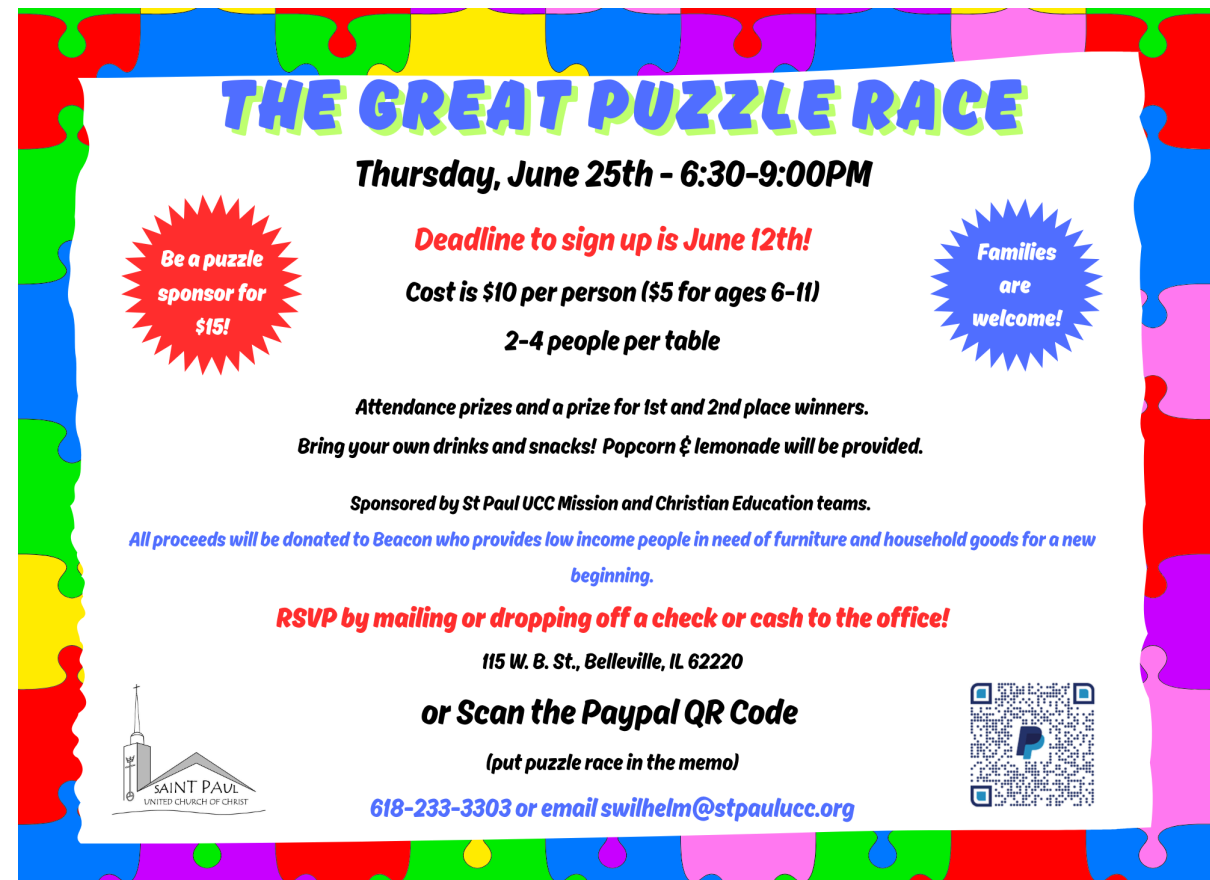
Bring your friends!



GRIEFWORKS
An LGBTQIA+
Grief Support Group

A peer support group for anyone in the LGBTQIA+ community who has experienced loss and is struggling with grief.

MEETINGS HELD
4TH MONDAY
EVERY MONTH
6:30-8:00 pm
St. Paul UCC
115 W. B Street
Belleville, IL 62220
griefworks2025@gmail.com



THE GREAT PUZZLE RACE
Thursday, June 25th - 6:30-9:00PM

Be a puzzle sponsor for \$15!

Deadline to sign up is June 12th!

Cost is \$10 per person (\$5 for ages 6-11)

Families are welcome!

2-4 people per table

Attendance prizes and a prize for 1st and 2nd place winners.

Bring your own drinks and snacks! Popcorn & lemonade will be provided.

Sponsored by St Paul UCC Mission and Christian Education teams.

All proceeds will be donated to Beacon who provides low income people in need of furniture and household goods for a new beginning.



RSVP by mailing or dropping off a check or cash to the office!

115 W. B. St., Belleville, IL 62220

or Scan the Paypal QR Code

(put puzzle race in the memo)

618-233-3303 or email swilhelm@stpaulucc.org



Greetings St. Paul,

Happy June! Summer officially begins later this month, but for all intents and purposes, summer is already here. Schools are out for break. Days are getting longer. Plants and flowers are in full bloom. Gardens are being planted. Sounds of kids and adults outside and on walks fill the afternoon and evening hours. Grills are being fired up. You get the idea.

At Easter we lifted our Alleluas in a festive celebration of life over the power of death. For fifty days, we proclaimed that Christ is risen, and on Pentecost we celebrated the outpouring of the Holy Spirit. May 31 was Trinity Sunday, and now we are entering into Ordinary Time. The seasons of the church reflect the seasons of each of our lives and (in this part of the world) the seasons of nature coincide. What a beautiful connection that also mirrors St. Paul congregational life. Our community of faith unites us in the journey of faith. The journey is full of incredible joys and overwhelming sorrows. Through it all, we—like the presence of God—are there for one another and the world around us. Think about how that community and connection has been and continues to be to you. Think about how it is slowly becoming less common over the last decade or so.

The covenant we make with one another as a faith community is precious. Not because it is flawless—far from it. What makes a community of faith valuable is the caring and connection we find in our shared faith and a desire to care for each other and serve our community and world that desperately needs us—to be the church.

As we begin to enjoy the lazy days of summer and travel or enjoy staycation, think and pray about the process of finding the right pastor to partner with us and provide what St. Paul always has at its best. A strong community of faith who is there for each other and our community in all the stages of this life.

Blessings!

P.S. Thanks to all who participate in our music ministry's Chancel Choir for leading us so beautifully in worship. They are taking a break for summer. They would be happy to have you join them in the fall.



In the coming weeks and months, please be on the lookout for updates and announcements regarding the process on our website (www.stpaulucc.org), on Facebook, in the monthly “Our St. Paul Newsletter” and weekly news and notes in the Sunday bulletin.

In his letter to the church in Rome, our namesake, the Apostle Paul, reminded the church that “we who are many are one body, and each member belongs to one another (Romans 12:5). With that in mind, let us engage in the process of “completing the circle” at our St. Paul. Please do not hesitate to contact your Personnel Team with any questions you may have.

Sincerely,
Brett White (Personnel Team Leader)
Leslie Dahm, Donna Nettelton, Al Scharf, Al Stahl, Rusty Wagner, Debbie Lippert



FATHER'S DAY HONOR ROLL



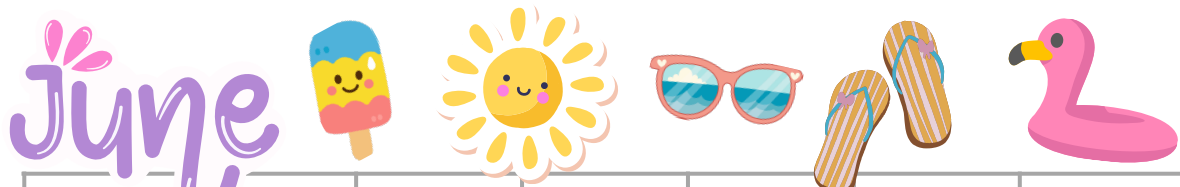
THE MISSION BOARD INVITES YOU TO HONOR YOUR FATHER (OR ANY SPECIAL MAN IN YOUR LIFE) ON FATHER'S DAY, SUNDAY, JUNE 21ST! GIVE A DONATION IN HIS NAME AND HE WILL BE PLACED ON THE FATHER'S DAY HONOR ROLL IN THE BULLETIN ON FATHER'S DAY! PLEASE PLACE YOUR DONATIONS IN THE OFFERING BOXES ALONG WITH THIS FORM OR MAIL TO THE CHURCH OFFICE BY JUNE 14TH.

THIS YEAR THE MISSION BOARD WILL FOCUS THESE CONTRIBUTIONS TO CAMP DUBOIS AND KINDERCOTTAGE.

IN HONOR OR MEMORY OF (CIRCLE ONE)

FATHER / LOVED ONE'S NAME _____

YOUR NAME _____



SUN	MON	TUE	WED	THU	FRI	SAT
	1	2 9am-Quilters 5pm-Community Dinner	3 1pm-With You 5:30pm-Farewell Dinner for Pat	4	5 Shriner's Parade 7:30pm	6
7 9am-Worship 10am-coffee	8	9 9am-Quilters 5pm-Community Dinner	10	11 7pm-Personnel Mtg.	12	13
14 9am-Worship 10am-coffee 10am-Mission Mtg	15	16 9am-Quilters 10am-Seekers 1pm-Mats 5pm-Community Dinner	17 1pm-Women's Guild	18 6pm-Council Mtg.	19	20
21 9am-Worship 10am-coffee HAPPY FATHER'S DAY Summer	22 6pm Monday/Funday 6:30pm Griefworks Mtg.	23 9am-Quilters 5pm-Community Dinner 6:30pm-St. Paul Progress Mtg.	24	25 The Great Puzzle Race 6:30pm	26	27
28 9am-Worship 10am-Culinaires Breakfast	29	30 9am-Quilters 5pm-Community Dinner				

Coffee Hour Host Schedule:
 June 7 - Zoey Davenport
 June 14 - Al Scharf
 June 21 - Linda & Carol Speichinger
 June 28 - Culinaires

PLEASE CONSIDER BEING A COFFEE HOUR HOST !

It takes about 15-20 min to set up. Our guests arrive about 10:00. Better to have their coffee ready at that time. Last coffee call no later than 11:00, if not sooner. Takes about 20-25 min to clean up. Printed instructions are available. Assistance is always available. **Contact the office to sign up!**



SHRINERS PARADE
JUNE 5, 2026

PARADE WALKERS & RIDERS NEEDED TO HAND OUT BEADS! FUN EVENING OF COMMUNITY FELLOWSHIP REPRESENTING ST PAUL!



St. Paul United Church of Christ
 115 West 8 Street, Belleville, IL
www.stpaulucc.org

GRADUATE RECOGNITION 2026

We would like to recognize our St. Paul Family graduates on June 14. Please fill in the following information and place it in the offering plate or give it to Sherry in the office by June 8.

GRADUATE NAME: _____

SCHOOL _____ DEGREE _____

Flowers, Music and Bulletin sponsorships are a lovely way to honor the memory, birthday or achievement of your loved one. To sign up, you can call or email the church office. 618-233-3303 ~ swilhelm@stpaulucc.org
 Cost is \$35.00.

